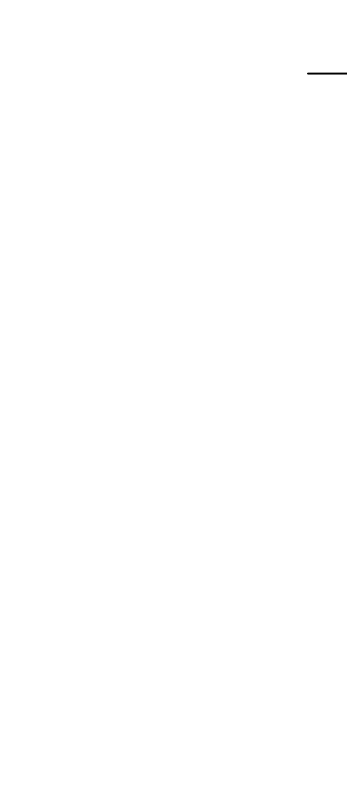
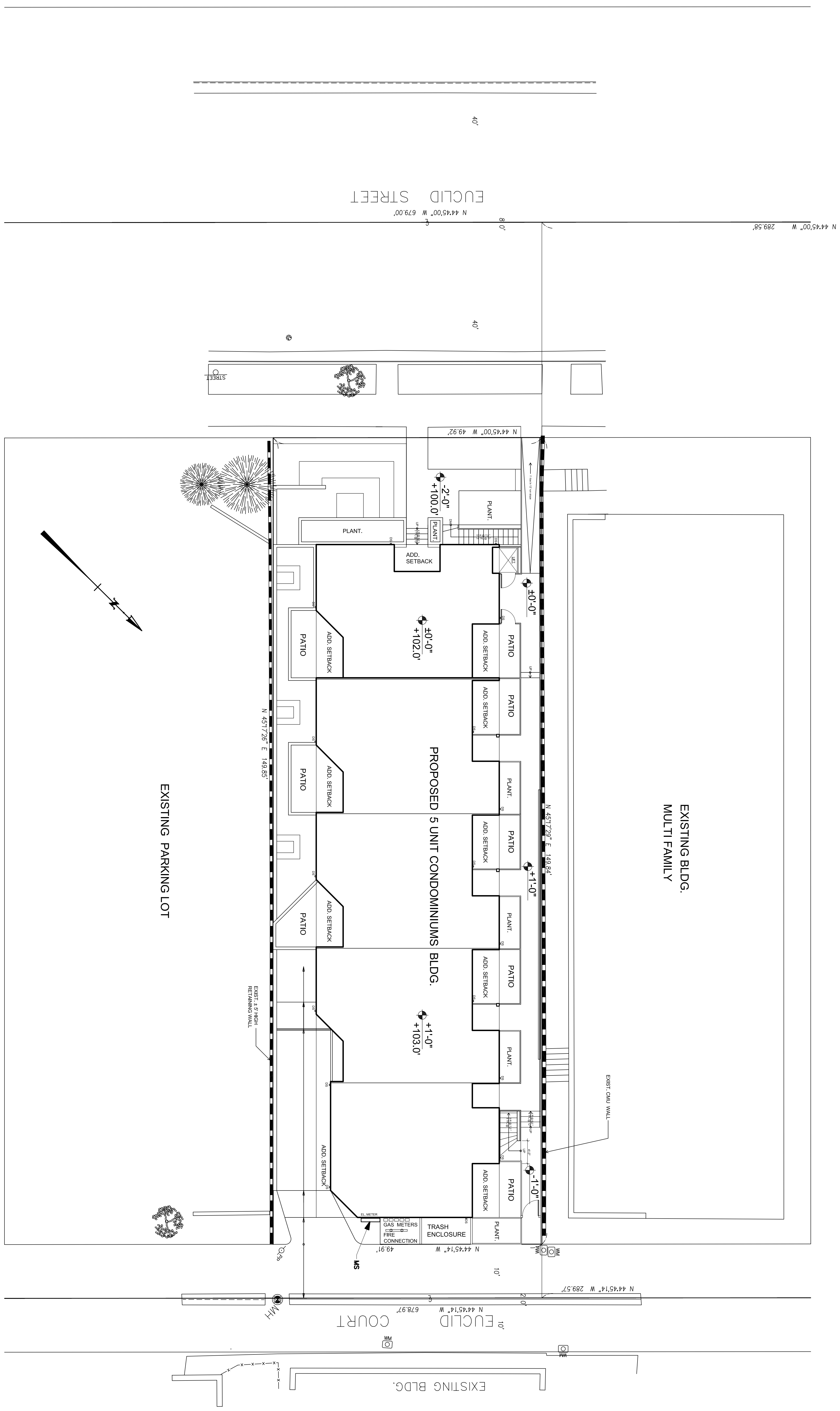


ALL DESIGN, DESIGN ARRANGEMENTS AND PLANS INDICATED OR REPRESENTED BY THIS DRAWING ARE OWNED BY ABRARI AND ASSOCIATES AND WERE CREATED IN CONNECTION WITH THE PROJECTED PROJECT. NONE OF THE DESIGN, DESIGN ARRANGEMENTS OR PLANS SHALL BE USED BY OR DISCLOSED TO FOR ANY PURPOSE WHATSOEVER WITHOUT THE WRITTEN AUTHORIZATION OF ABRARI AND ASSOCIATES, INC.



SHEET TITLE
SITE ELECTRICAL PLAN

PROJECT NO.: 5-382

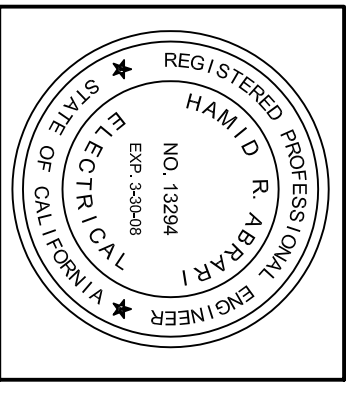
SCALE: AS SHOWN

DATE: 11-30-2008

BY: BB

CHECKED: HRA

DRAWING NO.: E-3.0



PROJECT

5 UNIT CONDOMINIUMS

1327 EUCLID ST.,
SANTA MONICA, CA 90404

DEVELOPER

MR. ALI MADANI & MR. HOSSEIN ASHTIANI

1327 EUCLID ST.,
SANTA MONICA, CA 90404

ABRARI + ASSOCIATES
ELECTRICAL ENGINEERS
1618 BEN LOMOND DR.
GLENDALE, CA 91202
TEL. 818.507.0088 FAX 818.241.4866
CEL. 818.497.0330
MAIL@ABRARI.COM

L&V ARCHITECTS
1514 17th Street, Suite 207
Santa Monica, CA 90404
Tel. (310) 829 0996; Fax. (310) 829 7889

REVISIONS