

NO.	REVISION	DATE



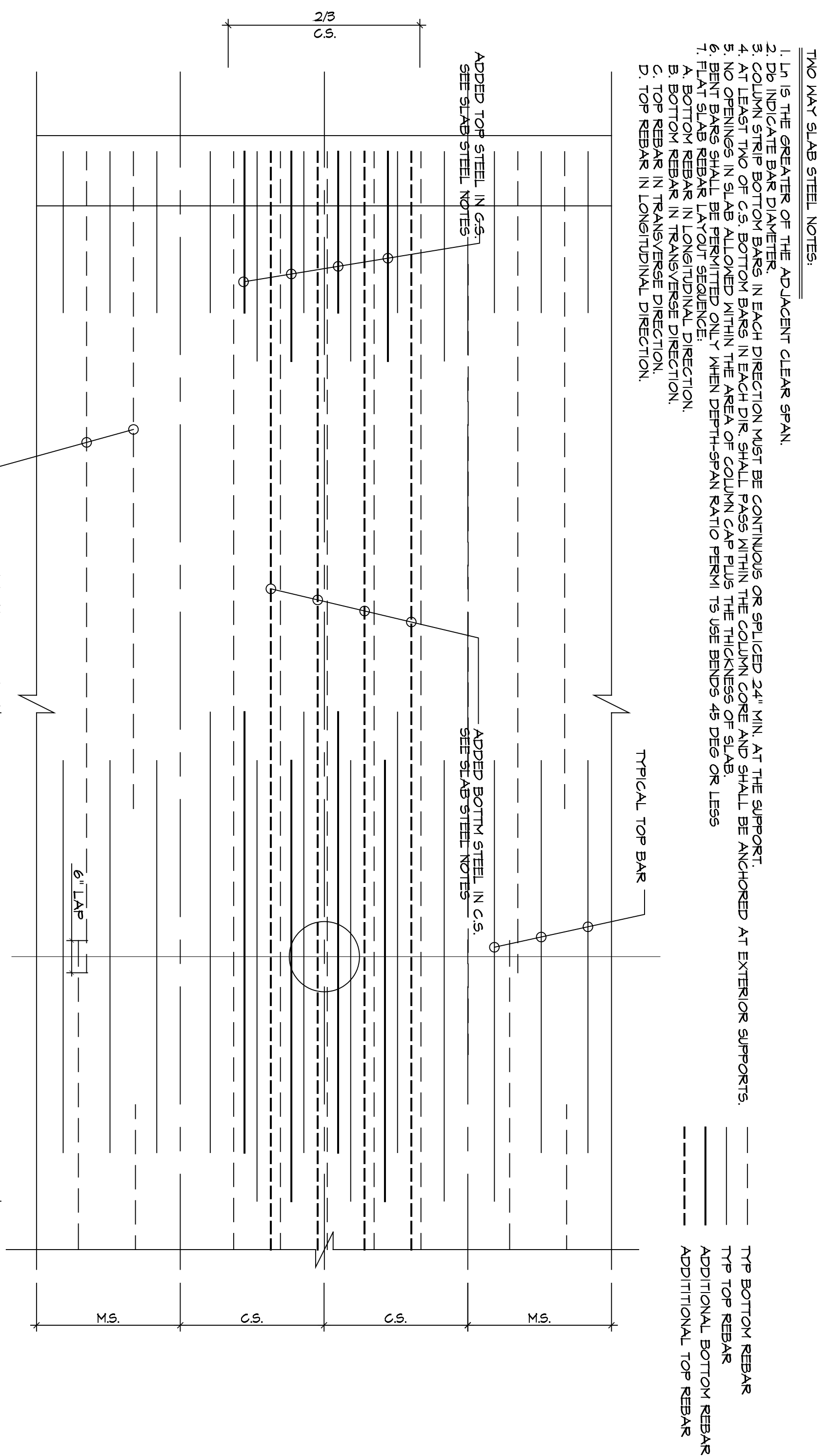
MR. ALI MADANI & MR. HOSSEIN ASHTIANI
 5 UNIT CONDOMINIUMS at
 1327 EUCLID STR., SANTA MONICA, CA-90404

L&V ARCHITECTS
 1514 17th Street, Suite 207
 Santa Monica, CA 90404
 Tel. (310) 829 0996; Fax. (310) 829 7889

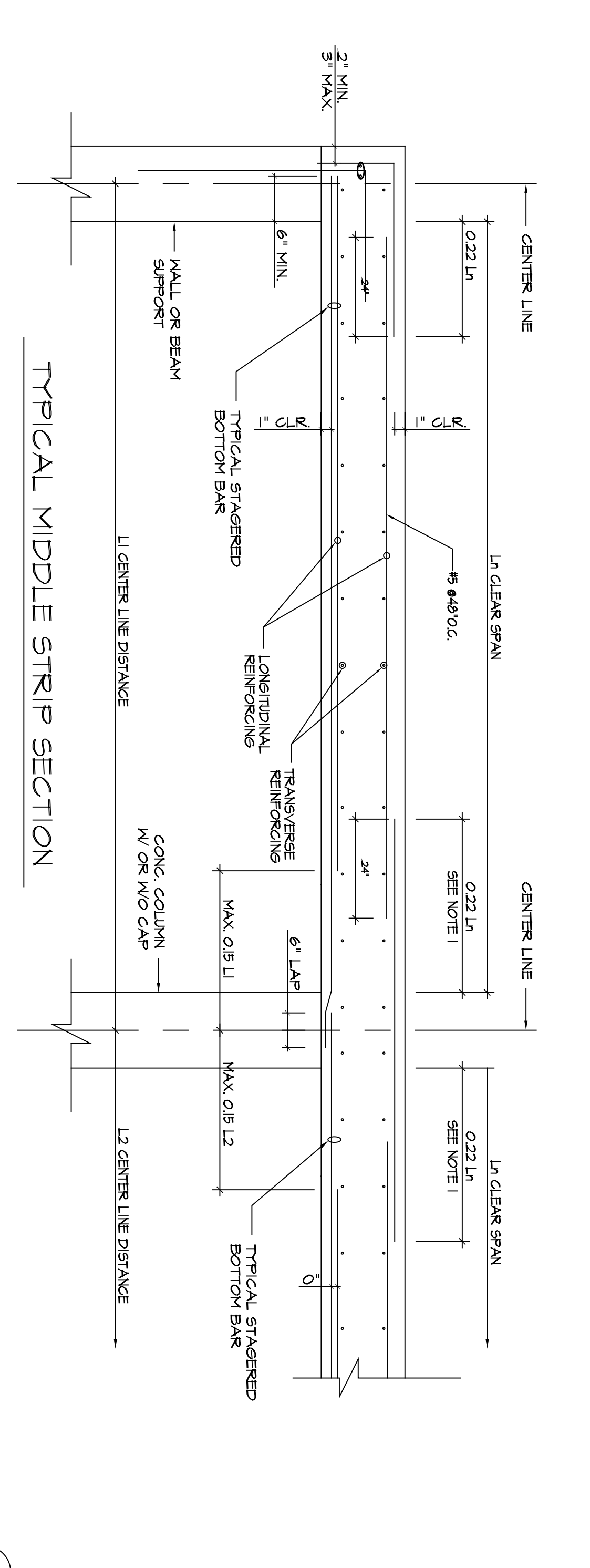
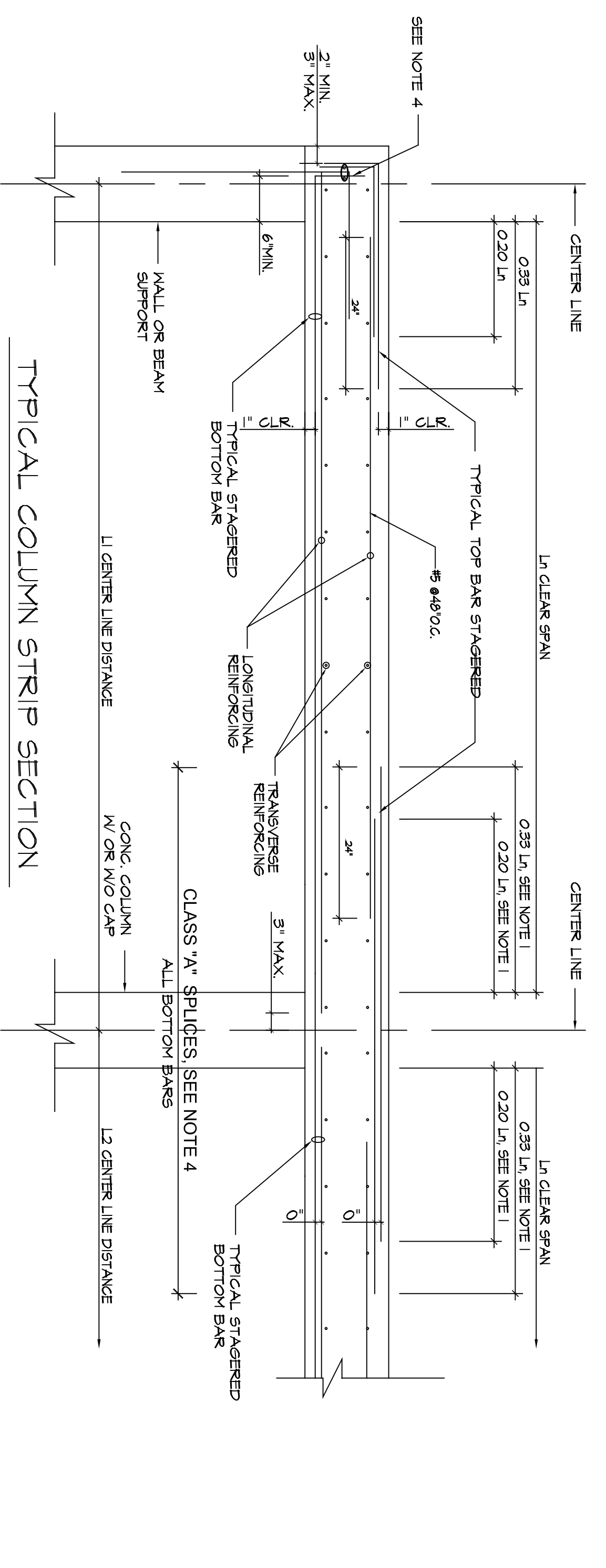
TITLE
 DETAILS

SCALE
 DATE
 02/27/07

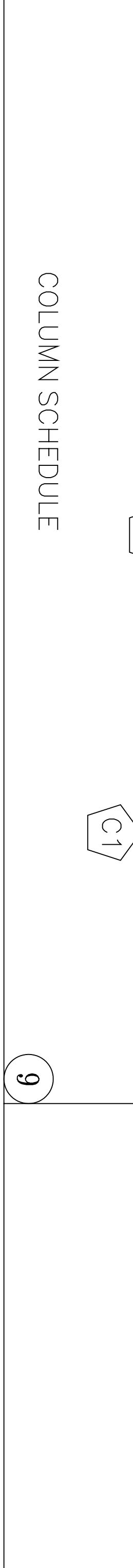
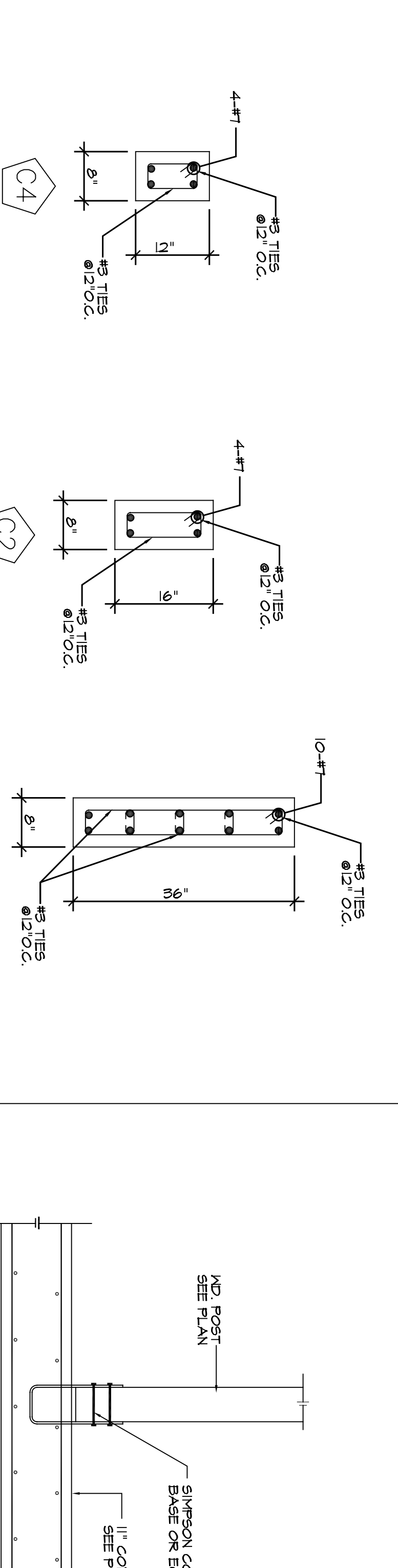
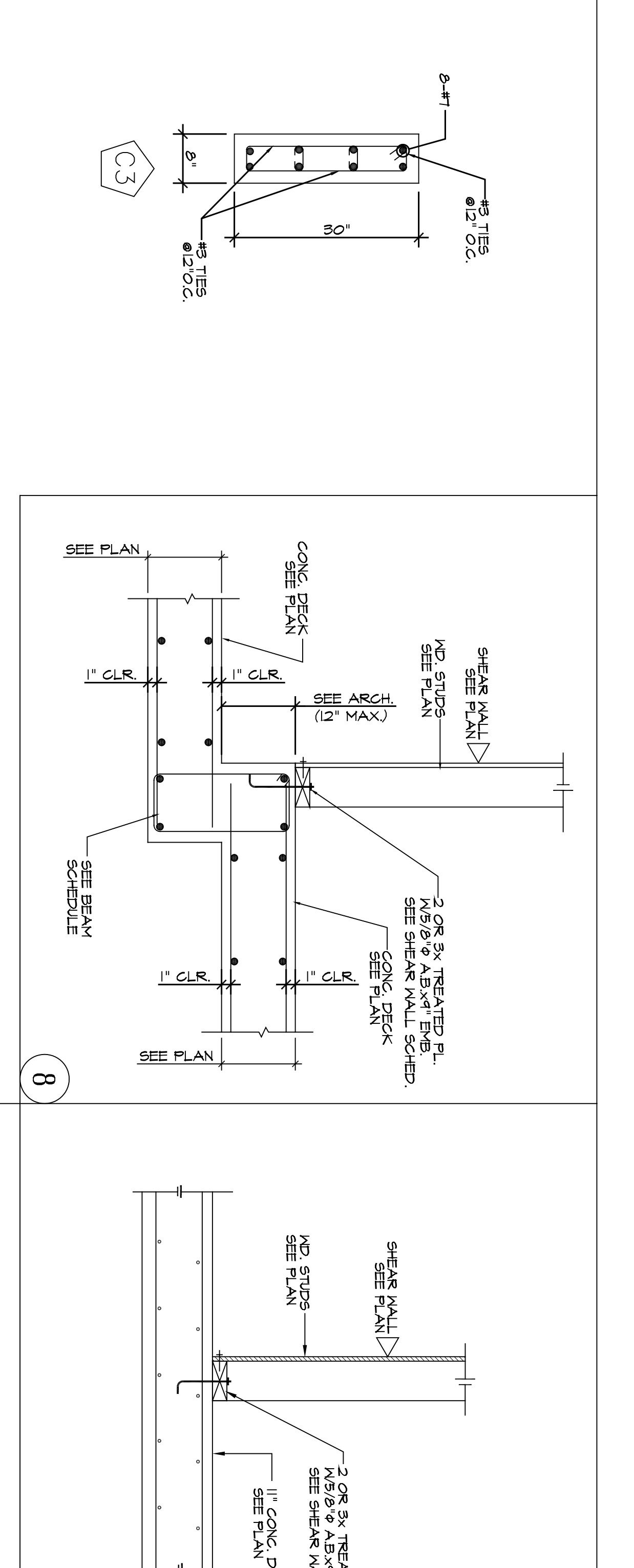
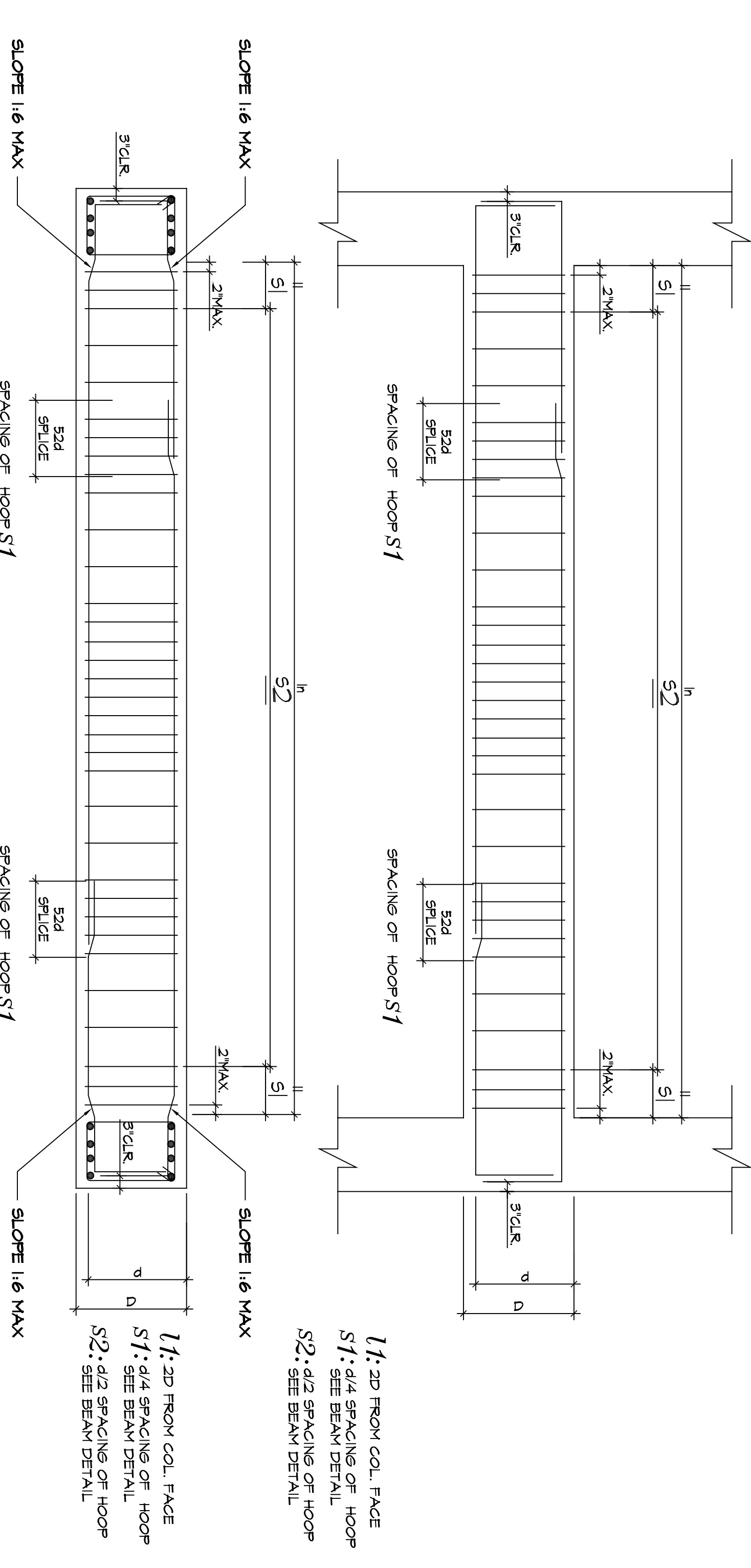
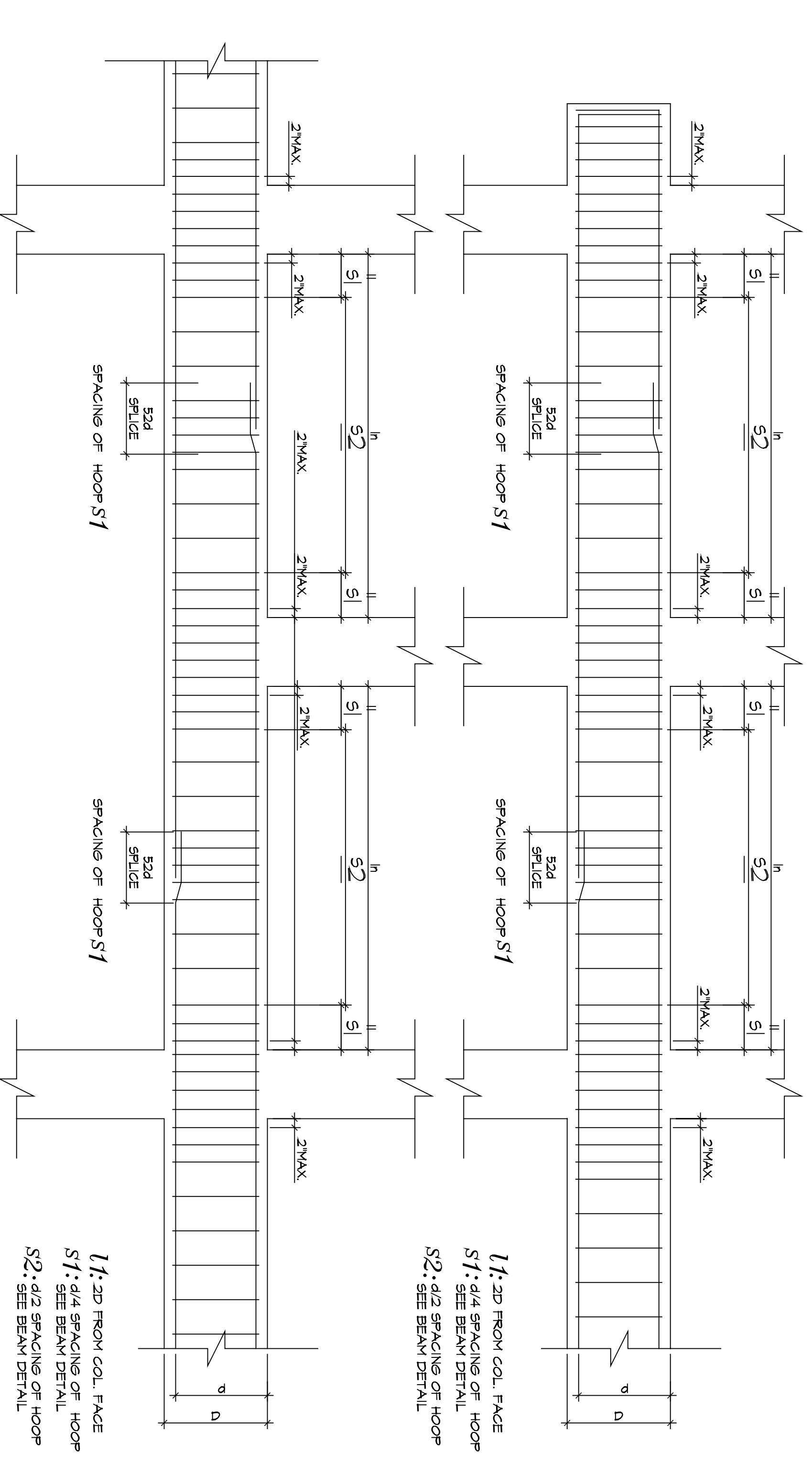
SHEET NUMBER
 S-3.2



* NOTE:
 ADD STEEL TO BE PLACED WITHIN 2/3 OF COL. STRIP CENTERED TO THE COLUMN LINE



- TWO WAY SLAB STEEL NOTES
1. L1 IS THE GREATER OF THE ADJACENT CLEAR SPAN.
 2. COLUMN STRIP BOTTOM BARS IN EACH DIRECTION MUST BE CONTINUOUS OR SPLICED 24" MIN. AT THE SUPPORT.
 3. AT LEAST TWO OF THE BOTTOM BARS IN EACH DIR. SHALL PASS WITHIN THE COLUMN CORNER AND SHALL BE ANCHORED AT EXTERIOR SUPPORTS.
 4. BEAT BARS SHALL BE PERMITTED ONLY WITHIN DEPTH SPAN BAY TO BE BENT TO BE BENDS OF 75% OR LESS
 5. FLAT SLAB REBAR LAYOUT SECTION
 6. BOTTOM REBAR IN TRANSVERSE DIRECTION
 7. TOP REBAR IN TRANSVERSE DIRECTION
 8. BOTTOM REBAR IN LONGITUDINAL DIRECTION
 9. TOP REBAR IN LONGITUDINAL DIRECTION



TITLE	SCALE	DATE
DETAILS		02/27/07